

N. Olympic LE Workplan Proposals 2025

Date:

7-Jan-25

Projects listed from West to East (1 new project submitted)

ID	Title	Category	Link to Project
21001	Expansion of Shipwreck Point NRCA	Capital	SRP Project (wa.gov)
12096	WRIA 19 Priority Acquisitions	Capital	SRP Project (wa.gov)
19102	Hoko Culvert #80001279 Replacement	Capital	SRP Project (wa.gov)
19103.1	Johnson Creek, Triple Culverts Replacement	Capital	SRP Project (wa.gov)
09001.2	Little Hoko River Large Wood Restoration Project	Capital	SRP Project (wa.gov)
22001	Wright's Creek Fish Passage Project	Capital	SRP Project (wa.gov)
22002	Hoko Tributary Fish Passage Correction: Culvert #80001331	Capital	SRP Project (wa.gov)
19105.1	Upper Cowan Ranch ELJ Project	Capital	SRP Project (wa.gov)
09004.1	Hoko Watershed Instream LWD Restoration Project	Capital	SRP Project (wa.gov)
11084	Upper Hoko LWD Restoration Project	Capital	SRP Project (wa.gov)
13101.1	Lower Hoko Acquisition and Restoration Project	Capital	SRP Project (wa.gov)
09005	Sekiu Mainstem (RM 2-5) LWD Restoration	Capital	SRP Project (wa.gov)
09003	WRIA 19 Riparian Restoration	Capital	SRP Project (wa.gov)
11085.2	South Fork Pysht River Watershed Wood Restoration	Capital	SRP Project (wa.gov)
09086.1	Pysht Floodplain Acquisition and Restoration	Capital	SRP Project (wa.gov)
09009.1	Pysht River Salt Marsh Estuary Restoration Project	Capital	SRP Project (wa.gov)
23001	Butler Creek Fish Passage Design and Construction	Capital	SRP Project (wa.gov)
09011	Twin River Acquisition	Capital	SRP Project (wa.gov)
10080.3	Lyre River Protection and Restoration	Capital	SRP Project (wa.gov)

19104	Lyre River Habitat Restoration Project	Capital	SRP Project (wa.gov)
19101	WRIA 19 Fish Passage Corrections on Joyce-Piedmont Road	Capital	SRP Project (wa.gov)
09013	Lower Salt Creek Restoration and Protection	Capital	SRP Project (wa.gov)
09015	Salt Creek Final Fish Passage Corrections Project	Capital	SRP Project (wa.gov)
09015.1	Kreaman Creek, Trib. To Salt Creek	Capital	SRP Project (wa.gov)
14106	Elwha Acquisition and Restoration Project	Capital	SRP Project (wa.gov)
09016.3	Elwha River Engineered Log Jams	Capital	SRP Project (wa.gov)
24001	Elwha River Salmon Monitoring	Non-Capital	SRP Project (wa.gov)
11087	Elwha River Revegetation Project	Capital	SRP Project (wa.gov)
09055.2	Elwha Estuary Conservation and Restoration	Capital	SRP Project (wa.gov)
13102	Little River LWD Project	Capital	SRP Project (wa.gov)
16103.1	Indian Creek Habitat Restoration Project	Capital	SRP Project (wa.gov)
16104	Elwha Hot Springs Road Restoration	Capital	SRP Project (wa.gov)
22004	Ediz Hook Drift Cell Feasibility	Capital	SRP Project (wa.gov)
23002	Port Angeles Harbor/ Tributaries Conservation and Restoration	Capital	SRP Project (wa.gov)
09021	Valley Creek Restoration Phase 3	Capital	SRP Project (wa.gov)
11088.3	Ennis Creek Fish Passage Barrier Removal	Capital	SRP Project (wa.gov)
09026	Morse Creek Property Acquisition	Capital	SRP Project (wa.gov)
16102	Morse Creek Acquisition & Restoration	Capital	SRP Project (wa.gov)
10079	Lower Morse Creek Feasibility Study	Capital	SRP Project (wa.gov)
09027.2	Siebert Creek Ecosystem Protection Project	Capital	SRP Project (wa.gov)
11090.1	Siebert Creek Large Wood Restoration: Old Olympic Highway to Highway 101	Capital	SRP Project (wa.gov)
10078.1	McDonald Creek Large Wood Restoration	Capital	SRP Project (wa.gov)
09039.2	McDonald Creek Barrier Removal and Channel Restoration	Capital	SRP Project (wa.gov)

22003	Dungeness Bay Shoreline Restoration	Capital	SRP Project (wa.gov)
22005	Monitoring Dungeness Floodplain Changes	Non-Capital	SRP Project (wa.gov)
09029.2	Dungeness River Large Wood Restoration	Capital	SRP Project (wa.gov)
09030.1	Dungeness River Riparian Habitat Protection	Capital	SRP Project (wa.gov)
09031.3	Dungeness River Riparian Restoration	Capital	SRP Project (wa.gov)
09032.1	Dungeness Drift Cell Conservation	Capital	SRP Project (wa.gov)
09091.1	Dungeness River Instream Flow Restoration-Irrigation Efficiencies	Capital	SRP Project (wa.gov)
12098.2	Dungeness River Instream Flow Restoration-Storage	Capital	SRP Project (wa.gov)
09092.2	Dungeness River Floodplain Restoration	Capital	SRP Project (wa.gov)
14107	Sequim Bay Shoreline Restoration	Capital	SRP Project (wa.gov)
09093	North Sequim Bay Drift Cell Conservation Project	Capital	SRP Project (wa.gov)
11094	Chicken Coop Road Culvert Replacement Project	Capital	SRP Project (wa.gov)
09053	Clallam Watertype Inventory and Assessment	Non-Capital	SRP Project (wa.gov)

N. Olympic LE Workplan Proposals 2025	Date:	Cap Max Possible Score = 206.96	Non-Cap Max Possible Score = 163.47
	7-Jan-25		

Projects Listed in Rank Order

Rank	Project ID	Title	Category	Weighted Mean Score	Normalized Score
1	09092.2	Dungeness River Floodplain Restoration	Capital	174.23	0.842
2	09030.1	Dungeness River Riparian Habitat Protection	Capital	166.77	0.806
3	22003	Dungeness Bay Shoreline Restoration	Capital	166.04	0.802
4	16103.1	Indian Creek Habitat Restoration Project	Capital	165.71	0.801
5	09029.2	Dungeness River Large Wood Restoration	Capital	165.69	0.801
6	09055.2	Elwha Estuary Conservation and Restoration	Capital	164.53	0.795
7	09091.1	Dungeness River Instream Flow Restoration-Irrigation Efficiencies	Capital	162.13	0.783
8	13102	Little River LWD Project	Capital	161.79	0.782
9	09016.3	Elwha River Engineered Log Jams	Capital	161.22	0.779
10	22005	Monitoring Dungeness Floodplain Changes	Non-Capital	126.31	0.773
11	09032.1	Dungeness Drift Cell Conservation	Capital	159.63	0.771
12	09031.3	Dungeness River Riparian Restoration	Capital	159.51	0.771
13	09009.1	Pysht River Salt Marsh Estuary Restoration Project	Capital	157.25	0.760
14	16102	Morse Creek Acquisition & Restoration	Capital	154.32	0.746
15	12098.2	Dungeness River Instream Flow Restoration-Storage	Capital	153.90	0.744
16	09093	North Sequim Bay Drift Cell Conservation Project	Capital	153.18	0.740
17	24001	Elwha River Salmon Monitoring	Non-Capital	120.75	0.739
18	14106	Elwha Acquisition and Restoration Project	Capital	152.78	0.738
19	12096	WRIA 19 Priority Acquisitions	Capital	152.70	0.738
20	11088.3	Ennis Creek Fish Passage Barrier Removal	Capital	152.32	0.736
21	13101.1	Lower Hoko Acquisition and Restoration Project	Capital	150.08	0.725
22	11085.2	South Fork Pysht River Watershed Wood Restoration	Capital	148.30	0.717
23	19105.1	Upper Cowan Ranch ELJ Project	Capital	148.22	0.716
24	14107	Sequim Bay Shoreline Restoration	Capital	147.93	0.715
25	09013	Lower Salt Creek Restoration and Protection	Capital	147.68	0.714
26	11087	Elwha River Revegetation Project	Capital	147.42	0.712

27	19104	Lyre River Habitat Restoration Project	Capital	146.36	0.707
28	23002	Port Angeles Harbor/ Tributaries Conservation and Restoration	Capital	146.20	0.706
29	09053	Clallam Watertype Inventory and Assessment	Non-Capital	114.76	0.702
30	10079	Lower Morse Creek Feasibility Study	Capital	144.02	0.696
31	09086.1	Pysht Floodplain Acquisition and Restoration	Capital	143.40	0.693
32	09001.2	Little Hoko River Large Wood Restoration Project	Capital	143.02	0.691
33	11084	Upper Hoko LWD Restoration Project	Capital	142.77	0.690
34	22004	Ediz Hook Drift Cell Feasibility	Capital	138.97	0.672
35	19102	Hoko Culvert #80001279 Replacement	Capital	136.91	0.662
36	16104	Elwha Hot Springs Road Restoration	Capital	136.53	0.660
37	10080.3	Lyre River Protection and Restoration	Capital	134.36	0.649
38	09026	Morse Creek Property Acquisition	Capital	133.90	0.647
39	09015.1	Kreaman Creek, Trib. To Salt Creek	Capital	133.04	0.643
40	09027.2	Siebert Creek Ecosystem Protection Project	Capital	131.84	0.637
41	22001	Wright's Creek Fish Passage Project	Capital	130.84	0.632
42	09003	WRIA 19 Riparian Restoration	Capital	130.70	0.632
43	21001	Expansion of Shipwreck Point NRCA	Capital	130.65	0.631
44	11090.1	Siebert Creek Large Wood Restoration: Old Olympic Highway to Highway 101	Capital	129.65	0.626
45	22002	Hoko Tributary Fish Passage Correction: Culvert #80001331	Capital	129.43	0.625
46	10078.1	McDonald Creek Large Wood Restoration	Capital	127.74	0.617
47	11094	Chicken Coop Road Culvert Replacement Project	Capital	123.37	0.596
48	19101	WRIA 19 Fish Passage Corrections on Joyce-Piedmont Road	Capital	122.28	0.591
Projects ranked 48 up are eligible to apply for SRFB/PSAR funding					
49	23001	Butler Creek Fish Passage Design and Construction	Capital	118.75	0.574
50	09015	Salt Creek Final Fish Passage Corrections Project	Capital	117.14	0.566
51	09021	Valley Creek Restoration Phase 3	Capital	116.22	0.562
52	09004.1	Hoko Watershed Instream LWD Restoration Project	Capital	109.21	0.528
53	09005	Sekiu Mainstem (RM 2-5) LWD Restoration	Capital	105.97	0.512

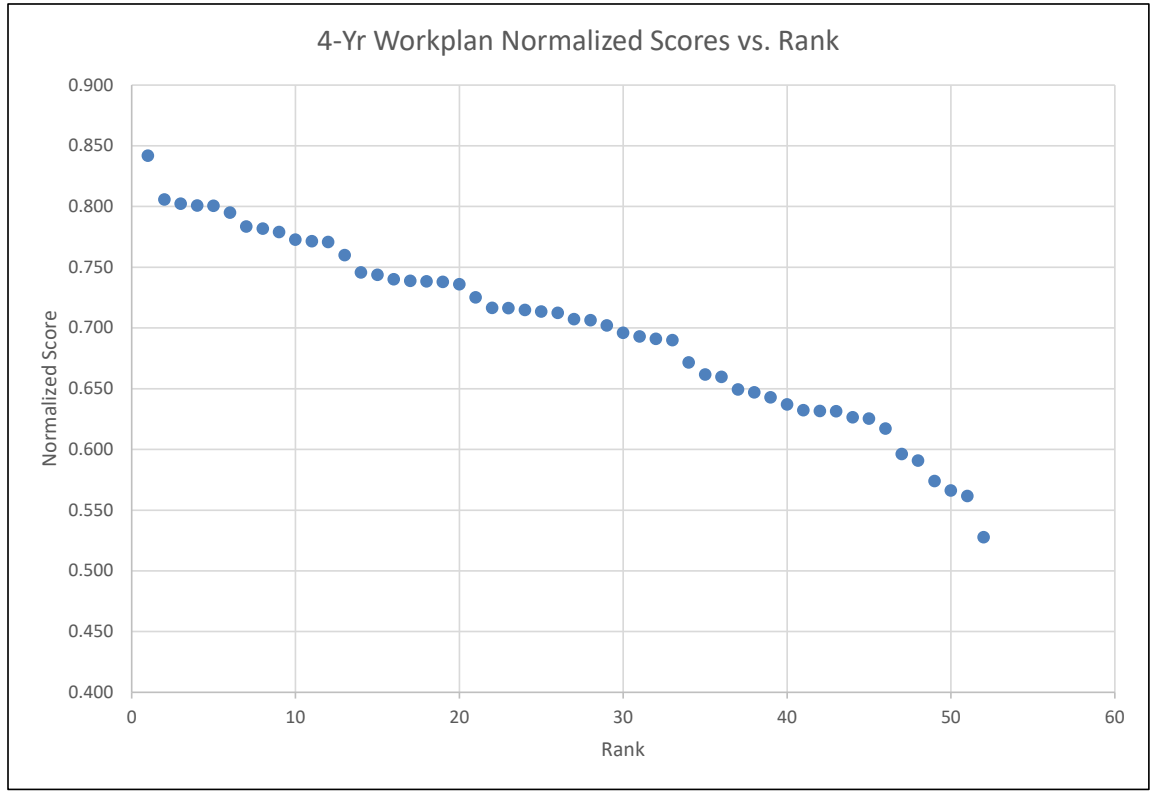
Funded Projects/ Not Ranked

Project ID	Title	Category
19103.1	Johnson Creek, Triple Culverts Replacement	Capital
09011	Twin River Acquisition	Capital
09039.2	McDonald Creek Barrier Removal and Channel Restoration	Capital

N. Olympic LE Workplan Project Proposal Scoring & Ranking Assessment

Date:
7-Jan-25

Rank	Normalized Score
1	0.842
2	0.806
3	0.802
4	0.801
5	0.801
6	0.795
7	0.783
8	0.782
9	0.779
10	0.773
11	0.771
12	0.771
13	0.760
14	0.746
15	0.744
16	0.740
17	0.739
18	0.738
19	0.738
20	0.736
21	0.725
22	0.717
23	0.716
24	0.715
25	0.714
26	0.712
27	0.707
28	0.706
29	0.702
30	0.696
31	0.693
32	0.691
33	0.690
34	0.672
35	0.662
36	0.660
37	0.649
38	0.647
39	0.643
40	0.637
41	0.632
42	0.632
43	0.631
44	0.626
45	0.625
46	0.617
47	0.596
48	0.591
49	0.574
50	0.566
51	0.562
52	0.528
53	0.512



N. Olympic LE Workplan Proposals 2025	Date: 7-Jan-25
--	-----------------------

Assessment of Work Plan Projects

CoV = Coefficient of Variation (Standard deviation/Mean as %)

ID	Title	Assessment	
		Scorer(s) Outside 2 Std Deviations?	CoV% Flags for Specific Criteria?
21001	Expansion of Shipwreck Point NRCA	0	Yes (Criteria 3, 5 & 8)
12096	WRIA 19 Priority Acquisitions	1	Yes (Criterion 5)
19102	Hoko Culvert #80001279 Replacement	1	Yes (Criterion 5)
19103.1	Johnson Creek, Triple Culverts Replacement	Not Scored *	Not Scored *
09001.2	Little Hoko River Large Wood Restoration Project	0	Yes (Criteria 5 & 7)
22001	Wright's Creek Fish Passage Project	1	Yes (Criteria 5 & 7)
22002	Hoko Tributary Fish Passage Correction: Culvert #80001331	1	Yes (Criteria 5 & 7)
19105.1	Upper Cowan Ranch ELJ Project	0	Yes (Criterion 5)
09004.1	Hoko Watershed Instream LWD Restoration Project	1	Yes (Criteria 5, 7, 10 & 12)
11084	Upper Hoko LWD Restoration Project	1	Yes (Criteria 5 & 7)
13101.1	Lower Hoko Acquisition and Restoration Project	1	Yes (Criterion 5)
09005	Sekiu Mainstem (RM 2-5) LWD Restoration	1	Yes (Criteria 5, 7, 10 & 12)
09003	WRIA 19 Riparian Restoration	1	Yes (Criteria 5 & 7)
11085.2	South Fork Pysht River Watershed Wood Restoration	1	Yes (Criteria 5 & 7)
09086.1	Pysht Floodplain Acquisition and Restoration	1	Yes (Criterion 5)
09009.1	Pysht River Salt Marsh Estuary Restoration Project	1	Yes (Criterion 5)
23001	Butler Creek Fish Passage Design and Construction	0	Yes (Criteria 5 & 7)
09011	Twin River Acquisition	Not Scored *	Not Scored *
10080.3	Lyre River Protection and Restoration	0	Yes (Criteria 5, 8 & 12)
19104	Lyre River Habitat Restoration Project	0	Yes (Criteria 5 & 7)
19101	WRIA 19 Fish Passage Corrections on Joyce-Piedmont Road	1	Yes (Criteria 5 & 7)
09013	Lower Salt Creek Restoration and Protection	0	None
09015	Salt Creek Final Fish Passage Corrections Project	1	Yes (Criteria 5 & 7)
09015.1	Kreaman Creek, Trib. To Salt Creek	1	Yes (Criteria 5 & 7)
14106	Elwha Acquisition and Restoration Project	1	None
09016.3	Elwha River Engineered Log Jams	1	Yes (Criterion 7)
24001	Elwha River Salmon Monitoring	1	Yes (Criterion 6)
11087	Elwha River Revegetation Project	1	Yes (Criterion 7)
09055.2	Elwha Estuary Conservation and Restoration	0	Yes (Criterion 12)
13102	Little River LWD Project	0	Yes (Criterion 7)
16103.1	Indian Creek Habitat Restoration Project	1	None
16104	Elwha Hot Springs Road Restoration	1	Yes (Criteria 7 & 12)
22004	Ediz Hook Drift Cell Feasibility	0	Yes (Criterion 7)
23002	Port Angeles Harbor/ Tributaries Conservation and Restoration	0	Yes (Criterion 7)
09021	Valley Creek Restoration Phase 3	0	Yes (Criteria 5 & 7)
11088.3	Ennis Creek Fish Passage Barrier Removal	0	Yes (Criterion 7)
09026	Morse Creek Property Acquisition	1	None
16102	Morse Creek Acquisition & Restoration	1	None
10079	Lower Morse Creek Feasibility Study	0	Yes (Criteria 7 & 12)
09027.2	Siebert Creek Ecosystem Protection Project	1	Yes (Criteria 5, 8 & 12)
11090.1	Siebert Creek Large Wood Restoration: Old Olympic Highway to Milemarker 404	1	Yes (Criterion 7)
10078.1	McDonald Creek Large Wood Restoration	1	Yes (Criterion 7)
09039.2	McDonald Creek Barrier Removal and Channel Restoration	Not Scored *	Not Scored *
22003	Dungeness Bay Shoreline Restoration	1	None
22005	Monitoring Dungeness Floodplain Changes	0	Yes (Criterion 6)
09029.2	Dungeness River Large Wood Restoration	1	Yes (Criterion 7)
09030.1	Dungeness River Riparian Habitat Protection	1	None
09031.3	Dungeness River Riparian Restoration	0	Yes (Criterion 7)
09032.1	Dungeness Drift Cell Conservation	1	Yes (Criterion 8)
09091.1	Dungeness River Instream Flow Restoration-Irrigation Efficiencies	0	Yes (Criterion 7)
12098.2	Dungeness River Instream Flow Restoration-Storage	0	Yes (Criterion 7)
09092.2	Dungeness River Floodplain Restoration	1	None
14107	Sequim Bay Shoreline Restoration	0	None
09093	North Sequim Bay Drift Cell Conservation Project	0	Yes (Criterion 8)
11094	Chicken Coop Road Culvert Replacement Project	0	Yes (Criterion 7)
09053	Clallam Watertype Inventory and Assessment	0	Yes (Criteria 1, 6 & 8)

Takeaways:

- 1) 31 out of 53 projects had one scorer who scored the project outside 2 standard deviations from the mean.
- 2) 44 of 53 projects had a CoV% >50% (This is considered a "flag") for one or more criteria.
- 3) 41 of 50 projects had CoV flags for at least one criterion for Capital Projects
- 4) 3 of 3 projects had CoV flags for at least one criterion for Non-Capital Projects

#7 (29 flags) - Criterion 7 = Protects high quality fish habitat

#5 (23 flags) - Criterion 5 = Addresses an ESA-listed stock

#12 (7 flags) - Criterion 12 = Project Readiness

#8 (6 flags)- Criterion 8 = Restores formerly productive habitat

N. Olympic LE Workplan Proposals 2025	Date:
	7-Jan-25

Mean of all Scores:	3.689
SD of all Scores:	0.94
2 X SD of all Scores:	1.88
Mean - 2 X:	1.81
Mean + 2 X:	5.57

**Elwha River Salmon
Monitoring**
24001

Overall Weighted Score

120.75

NS = No Score Given

CoV = Coefficient of Variation (Standard deviation/Mean as %)

ID	Criteria for Ranking	Score 0 to 5 with 5 being best																				Mean Score	Weight	Weighted Mean Score	CoV (%)
		Scorer 1	Scorer 2	Scorer 3	Scorer 4	Scorer 5	Scorer 6	Scorer 7	Scorer 8	Scorer 9	Scorer 10	Scorer 11	Scorer 12	Scorer 13	Scorer 14	Scorer 15	Scorer 16	Scorer 17	Scorer 18	Scorer 19	Scorer 20				
1	Advances robust harvestable stocks	4.00	5.00	4.00	4.50	1.00	4.00	5.00	5.00	2.50	2.00	4.00	5.00	4.00	4.50							3.893	3.47	13.52	31.5%
2	Advances implementation of recovery plans	3.50	5.00	5.00	5.00	1.00	4.00	5.00	4.50	4.50	2.50	0.50	4.00	3.00	4.50							3.71	4.03	14.96	39.8%
3	Advances habitat protection and restoration	3.00	5.00	3.00	2.50	3.00	3.50	3.50	4.00	3.00	2.00	3.00	5.00	4.00	4.50							3.50	4.42	15.46	25.7%
4	Advances recovery of ecosystem function	3.50	5.00	3.00	3.00	2.00	3.50	5.00	4.50	4.00	2.00	0.50	3.50	3.00	4.50							3.36	4.31	14.45	37.6%
5	Advances ecosystem awareness	4.00	5.00	3.00	3.50	2.00	2.50	5.00	5.00	4.00	2.50	3.50	5.00	4.00	5.00							3.86	2.78	10.71	27.6%
6	Advances integration	3.50	5.00	3.00	2.00	1.00	1.50	5.00	4.00	1.00	2.00	0.50	5.00	3.00	3.50							2.86	2.28	6.51	54.7%
7	Fulfills requirements of external agencies	3.50	4.00	3.00	4.50	2.00	4.00	5.00	4.00	4.50	2.00	2.50	5.00	5.00	4.00							3.79	2.31	8.73	27.8%
8	Advances multi-agency funding strategy	3.50	5.00	4.00	4.50	2.00	5.00	4.00	3.00	3.00	2.00	4.00	5.00	5.00	4.00							3.86	2.03	7.82	27.1%
9	Spatial scale of influence	4.00	4.00	3.00	5.00	1.00	5.00	5.00	5.00	5.00	3.00	5.00	5.00	5.00	3.50							4.18	3.56	14.86	28.8%
10	Temporal scale of influence	3.50	4.00	3.00	5.00	1.00	5.00	4.00	5.00	3.50	2.00	5.00	5.00	5.00	3.50							3.89	3.53	13.73	32.3%
	Mean	3.60	4.70	3.40	3.95	1.60	3.80	4.65	4.40	3.50	2.20	2.85	4.75	4.10	4.15							Overall Weighted Score		120.75	
	CoV	8.8%	10.3%	20.6%	28.3%	43.7%	29.9%	12.5%	15.0%	33.7%	15.9%	63.0%	11.4%	21.4%	12.8%										
	Outside 2 Standard Deviations?	N	N	N	N	Y	N	N	N	N	N	N	N	N	N										

Comments
This is an important project that needs long term funding
Important to continue basic fish in/fish out data for monitoring of critical fish populations which would inform recovery efforts.

N. Olympic LE Workplan Proposals 2025	Date:
	7-Jan-25

Mean of all Scores:	5.00
SD of all Scores:	0.00
2 X SD of all Scores:	0.00
Mean - 2 X:	5.00
Mean + 2 X:	5.00

Non Capital Project

MAXIMUM POSSIBLE SCORE

Overall Weighted Score

163.47

NS = No Score Given

CoV = Coefficient of Variation (Standard deviation/Mean as %)

ID	Criteria for Ranking	Score 0 to 5 with 5 being best														Mean Score	Weight	Weighted Mean Score	CoV (%)	
		Scorer 1	Scorer 2	Scorer 3	Scorer 4	Scorer 5	Scorer 6	Scorer 7	Scorer 8	Scorer 9	Scorer 10	Scorer 11	Scorer 12	Scorer 13	Scorer 14					
1	Advances robust harvestable stocks	5.0	5.0	5.0	5.0	5.0	5.0	5.0	5.0	5.0	5.0	5.0	5.0	5.0	5.0	5.0	5.0	3.5	17.36	0.0%
2	Advances implementation of recovery plans	5.0	5.0	5.0	5.0	5.0	5.0	5.0	5.0	5.0	5.0	5.0	5.0	5.0	5.0	5.0	5.0	4.0	20.14	0.0%
3	Advances habitat protection and restoration	5.0	5.0	5.0	5.0	5.0	5.0	5.0	5.0	5.0	5.0	5.0	5.0	5.0	5.0	5.0	5.0	4.4	22.08	0.0%
4	Advances recovery of ecosystem function	5.0	5.0	5.0	5.0	5.0	5.0	5.0	5.0	5.0	5.0	5.0	5.0	5.0	5.0	5.0	5.0	4.3	21.53	0.0%
5	Advances ecosystem awareness	5.0	5.0	5.0	5.0	5.0	5.0	5.0	5.0	5.0	5.0	5.0	5.0	5.0	5.0	5.0	5.0	2.8	13.89	0.0%
6	Advances integration	5.0	5.0	5.0	5.0	5.0	5.0	5.0	5.0	5.0	5.0	5.0	5.0	5.0	5.0	5.0	5.0	2.3	11.39	0.0%
7	Fulfills requirements of external agencies	5.0	5.0	5.0	5.0	5.0	5.0	5.0	5.0	5.0	5.0	5.0	5.0	5.0	5.0	5.0	5.0	2.3	11.53	0.0%
8	Advances multi-agency funding strategy	5.0	5.0	5.0	5.0	5.0	5.0	5.0	5.0	5.0	5.0	5.0	5.0	5.0	5.0	5.0	5.0	2.0	10.14	0.0%
9	Spatial scale of influence	5.0	5.0	5.0	5.0	5.0	5.0	5.0	5.0	5.0	5.0	5.0	5.0	5.0	5.0	5.0	5.0	3.6	17.78	0.0%
10	Temporal scale of influence	5.0	5.0	5.0	5.0	5.0	5.0	5.0	5.0	5.0	5.0	5.0	5.0	5.0	5.0	5.0	5.0	3.5	17.64	0.0%
	Mean	5.0	5.0	5.0	5.0	5.0	5.0	5.0	5.0	5.0	5.0	5.0	5.0	5.0	5.0	5.0	5.0	Overall Weighted Score		163.47
	CoV	0.0%	0.0%	0.0%	0.0%	0.0%	0.0%	0.0%	0.0%	0.0%	0.0%	0.0%	0.0%	0.0%	0.0%	0.0%	0.0%			
	Outside 2 Standard Deviations?	N	N	N	N	N	N	N	N	N	N	N	N	N	N	N	N			

North Olympic Peninsula Lead Entity for Salmon 2024-2025- Non-Capital WORK PLAN Project Criteria									Date:
									7-Jan-25
ID	Ranking Criterion	Criterion Narrative	Score Value					*New Criterion Weight*	
			0	1	2	3	4		5
1	Advances robust harvestable stocks	To what extent does the proposed work lead to progress towards harvestable stocks?	Does not mention or address harvestable stocks at all	Mentions harvestable stocks but addresses criterion only vaguely; Benefits uncertain at best	Indirectly addresses harvestable stocks but only minimally	Indirectly addresses harvestable stocks but only moderately; Or directly addresses harvestable stocks but only minimally	Directly addresses with moderate benefits	Directly addresses with substantial benefits	3.5
2	Advances implementation of recovery plans	To what extent does the proposed work lead to progress in the implementation of recovery plans?	Does not mention or address recovery plans at all	Mentions recovery plan(s) but addresses criterion only vaguely; Benefits uncertain at best	Indirectly addresses recovery plan(s) but only minimally	Indirectly addresses recovery plan(s) but only moderately; Or directly addresses recovery plan(s) but only minimally	Directly addresses with moderate benefits	Directly addresses with substantial benefits	4.0
3	Advances habitat protection and restoration	To what extent does the proposed work lead to progress in protection and/or restoration of salmon habitat?	Does not mention or address habitat protection or restoration at all	Mentions habitat protection and restoration but addresses criterion only vaguely; Benefits uncertain at best	Indirectly addresses habitat protection and restoration but only minimally	Indirectly addresses habitat protection and restoration but only moderately; Or directly addresses habitat protection and restoration but only minimally	Directly addresses with moderate benefits	Directly addresses with substantial benefits	4.4
4	Advances recovery of ecosystem function	To what extent does the proposed work lead to progress in the recovery and restoration of ecosystem function(s)?	Does not mention or address ecosystem function at all	Mentions ecosystem function but addresses criterion only vaguely; Benefits uncertain at best	Indirectly addresses ecosystem function but only minimally	Indirectly addresses ecosystem function but only moderately; Or directly addresses ecosystem functions but only minimally	Directly addresses with moderate benefits	Directly addresses with substantial benefits	4.3
5	Advances ecosystem awareness	To what extent does the proposed work increase ecosystem awareness and its application? To what extent does the proposed address and overcome obstacles to ecosystem awareness?	Does not mention or address ecosystem awareness at all	Mentions ecosystem awareness but addresses criterion only vaguely; Benefits uncertain at best	Indirectly addresses ecosystem awareness but only minimally	Indirectly addresses ecosystem awareness but only moderately; Or directly addresses ecosystem awareness but only minimally	Directly addresses with moderate benefits	Directly addresses with substantial benefits	2.8
6	Advances integration	In advancing salmon recovery, there are four H's: Habitat, Harvest, Hatcheries, and Hydropower. To what extent does the proposed work acknowledge the influence of the other H's on the work and the potential influence of the work on the other H's?	Does not mention or address 4 H integration at all	Mentions 4 H integration but addresses criterion only vaguely; Benefits uncertain at best	Indirectly addresses 4 H integration but only minimally	Indirectly addresses 4 H integration but only moderately; Or directly addresses 4 H integration but only minimally	Directly addresses with moderate benefits	Directly addresses with substantial benefits	2.3
7	Fulfills requirements of external agencies	To what extent does the proposed work recognize and coordinate with the efforts and requirements of agencies? To what extent will the proposed work contribute to the knowledge and databases at the regional and state levels?	Does not mention or address external agency requirements at all	Mentions external agency funding but addresses criterion only vaguely; Benefits uncertain at best	Indirectly addresses external agency requirements but only minimally	Indirectly addresses external agency requirements but only moderately; Or directly addresses external agency requirements but only minimally	Directly addresses with moderate benefits	Directly addresses with substantial benefits	2.3
8	Advances multi-agency funding strategy	How well does the project further diversifying the funding base? To what extent will the proposed project be eligible and competitive for Non-SRFB funding?	Does not mention multi-agency funding at all	Mentions multi-agency funding but addresses criterion only vaguely; Benefits uncertain at best	Indirectly addresses multi-agency funding but only minimally	Indirectly addresses multi-agency funding but only moderately; Or directly addresses multi-agency funding but only minimally	Directly addresses with moderate benefits	Directly addresses with substantial benefits	2.0
9	Spatial scale of influence	How far does the spatial scale of influence extend?	Does not mention or address the potential spatial extent of the project at all; Spatial scale of benefits not discernible	Potential scale of influence minimal; Benefits local (limited to project area) at most and uncertain	Potential scale of influence slight; Scale of benefits more than local and discernible	Potential scale of influence over a moderate portion of a watershed or nearshore area; Benefits moderate and spread beyond the project area	Potential scale of influence over that majority of a watershed or nearshore area; Benefits more than moderate and spread through much of the system	Potential scale of influence over the whole of a watershed or nearshore area; Benefits substantial and spread through essentially all of system	3.6
10	Temporal scale of influence	How long does the temporal scale of influence endure?	Does not mention or address the potential temporal extent of the project at all; Temporal scale of benefits not discernible	Potential scale of influence minimal; Benefits seasonal at most and uncertain	Potential scale of influence slight; Scale of benefits more than 1 year but not 2 years	Potential scale of influence of moderate duration; Benefits are moderate and endure for 2 to 4 years	Scale of influence more than moderate duration; Benefits moderate and endure 5 to 10 years	Potential scale of influence of long term or indefinite duration; Benefits substantial and endure beyond 10 years	3.5