

WHAT IS ECOLOGICAL RESTORATION?

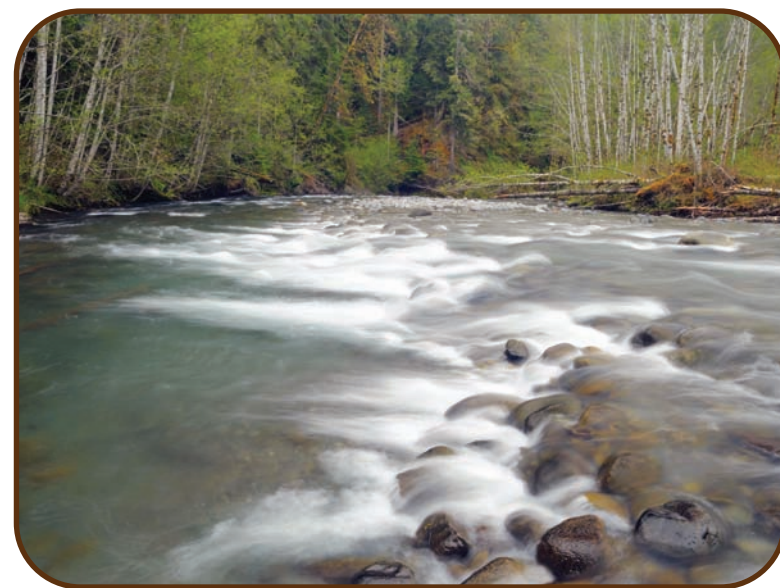
the process of assisting the recovery of an ecosystem that has been degraded, damaged, or destroyed

HOW DO YOU BENEFIT?

A restored ecosystem can provide a number of goods and services that humans care about:



Education Opportunities



Water Quality



Job Opportunities



Recreation Opportunities



Wildlife



Fish



Birds

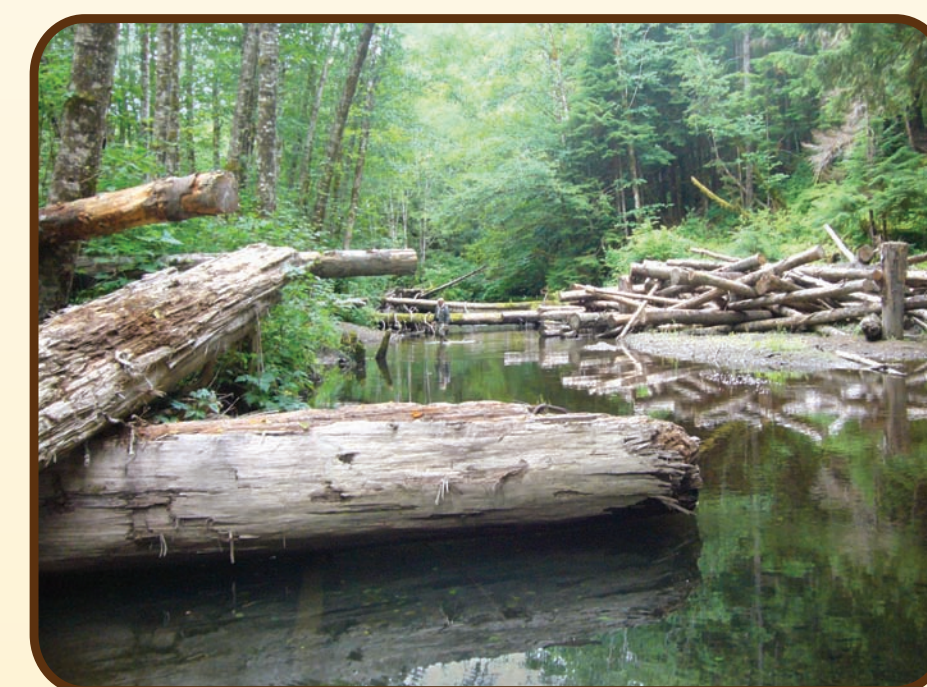


Shellfish



Native Plants

A Decade of Restoring Salmon Habitat in the Strait of Juan de Fuca Watersheds



HOKO RIVER

Recent success stories



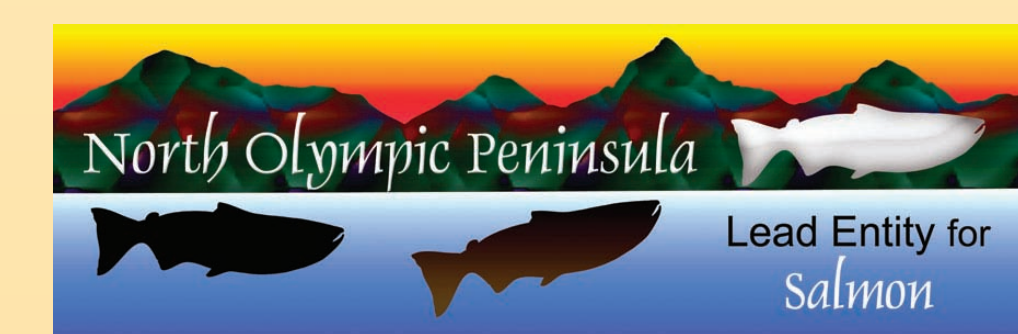
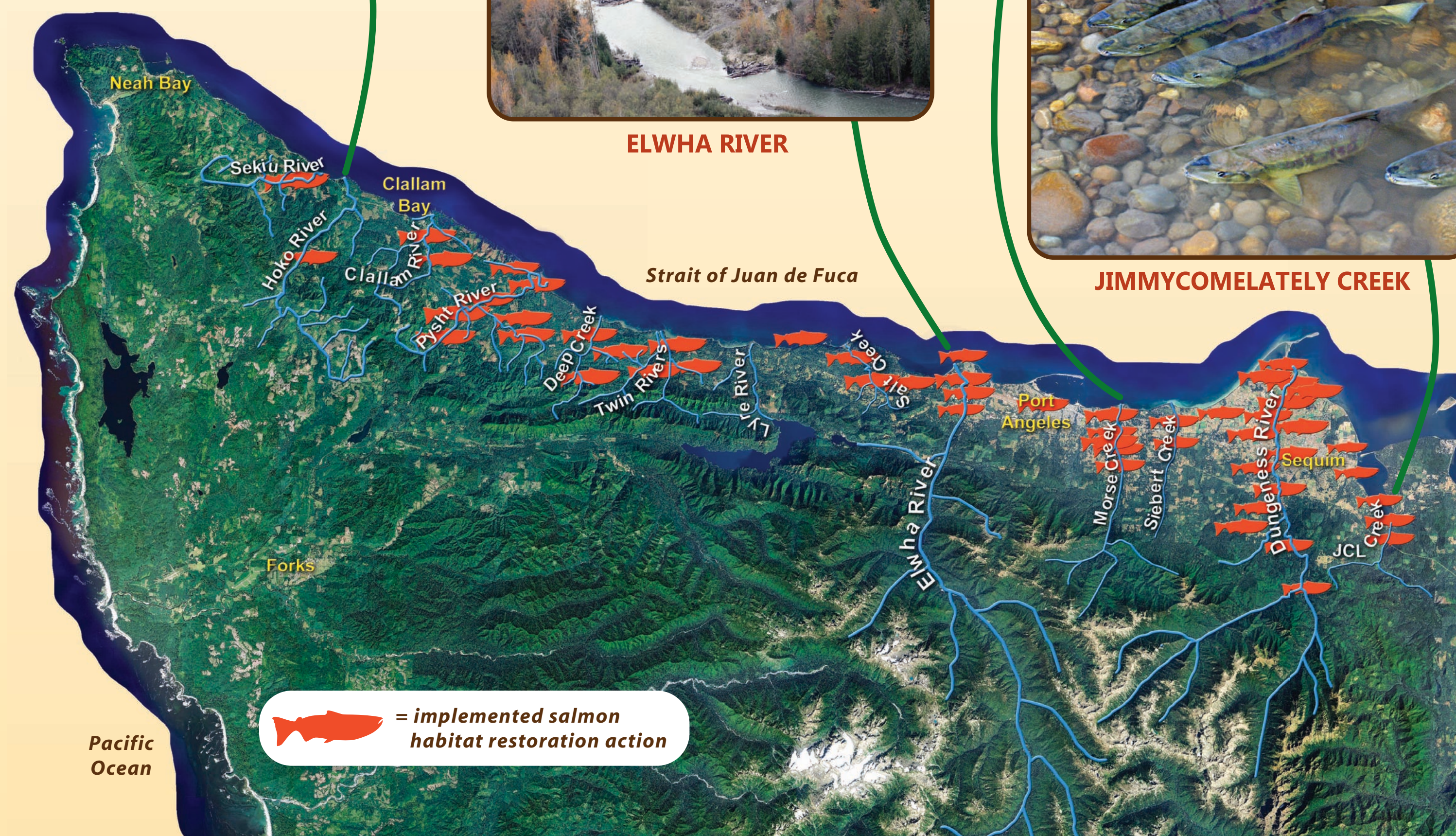
ELWHA RIVER



MORSE CREEK



JIMMYCOMELATELY CREEK



For more information contact us at:
(360) 417-2326 • hws.ekosystem.us

WHY BOTHER?

Degraded, damaged, or destroyed ecosystems can often recover more quickly with human assistance. Carefully chosen restoration actions can accelerate the ecosystem towards improved health and function.

Local salmon habitat success stories:

- **JIMMYCOMELATELY CREEK:** pre-restoration in 1999, a total of 7 endangered chum salmon returned to spawn; post-restoration in 2010, a total of 4,027 chum returned.
- **MORSE CREEK:** 19 engineered log jams (ELJs) installed for salmon habitat. 12.5 acres of floodplain reconnected. Channel lengths before restoration = 1,200 feet; after restoration = 1,900 feet main channel and 700 feet side channels.
- **ELWHA RIVER:** 33 ELJs installed (17 more planned 2012-13). 3 side channels with salmon habitat improvements. 3 dikes removed. 30,000 native trees and shrubs planted.
- **HOKO RIVER:** 1 fish-blocking culvert removed. 2 log bridges and associated channel constrictions removed. 9 ELJs installed to improve instream habitat complexity, floodplain connectivity, and salmon access to side channels, as well as reduce chronic bank erosion.

SIGN FUNDING PROVIDED BY:



Credits: Job Opportunities & Education Opportunities Photos (North Olympic Salmon Coalition Archives); Fish Photo (Kent Mayer, Washington Department of Fish and Wildlife); Shellfish Photo & Salmon Project Map (Randy Johnson, Jamestown S'Klallam Tribe); Hoko River Photo (North Olympic Peninsula Lead Entity Archives); Elwha River Photo (Mike McHenry, Lower Elwha Klallam Tribe); Morse Creek Photo (NOSC Archives); all other Photos by Dave Shreffler (Shreffler Environmental); Graphic Design & Layout by Dave Shreffler & Jessica Diebold (In Graphic Detail).